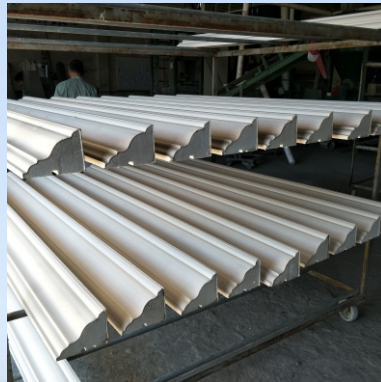




绿建机械

GREEN BUILDING INDUSTRY AND TRADING LIMITED

EPS (expandable polystyrene) INDUSTRY



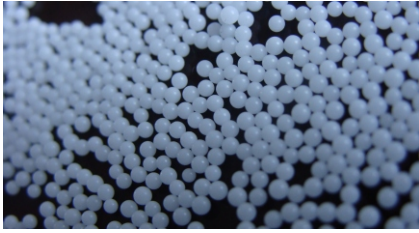
WEB: <http://greenindustry.en.alibaba.com>

Hot-line: +86 18057925735

Email: info@cngreenindustry.com

EPS Molding process diagram

EPS pre-expander line



EPS(Expandable polystyrene) Raw material



Pre-expander



pre-expanded material

Packaging production line

Shape molding production apply to:

- Agricultural and fish box
- Electronic parts package
- ICF construction parts
- Decoration parts
- Other special application, such as helmet, model...etc.



Shape molding machine



EPS Mould



Block production line

Block molding production apply to:

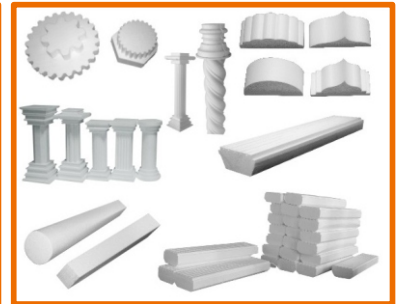
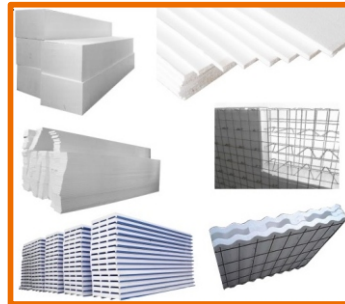
- Construction parts for decoration.
- Heating-Insulation wall and ceiling
- 3-D panel and sandwich panel
- Other applications



Block molding machine



Block cutter



EPS RECYCLE SYSTEM



EPS crusher



ENERGY SUPPLY:

- Electricity
- Steam system: steam boiler, steam accumulator.
- Compressed air system: compressor, compressed air receiver
- Water system: water pump, water cooling tower.



EPS block molding production line

Daily 300 cubic Meter EPS Block Production Line list

1	Batch Pre-expander SPJ150B Density :8-30g/l	1unit
2	EPS Block Molding Machine SPB400 With Vacuum System Length Length 4m x 1.2 mx 1m	1unit
3	Cutting Machine SPC400	1units
4	EPS Crusher	1unit
B	Auxiliary Equipment	
5	Silo(Semi-Auto) System	20units
6	Air compressor 3.6m3/min, 7 bar	1unit
7	Compressed Air Tank With Accessories, 2M3	1unit
8	Steam Accumulator 12m3 volumn	1unit
9	Cooling Water Pump,Cooling Tower 50m3/hour , as well as 7.5kw pump.	unit
10	Steam Boiler 2 tons per hour , 1Mpa	1unit
Total machine investment is around \$220,000		



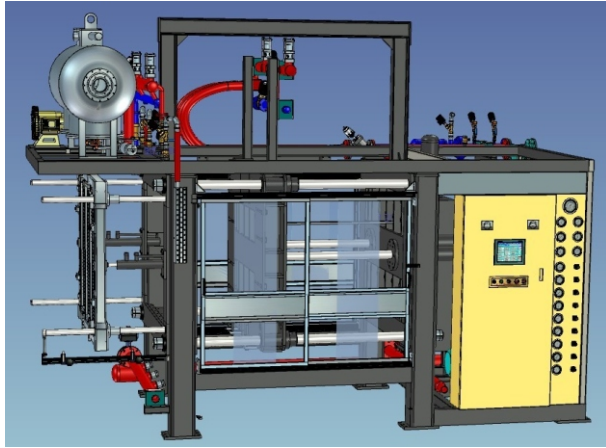
Item	PSB-DZ200	PSB-DZ300	PSB-DZ400	PSB-DZ600
Mould cavity size	2040*1240*1030(mm)	3060*1240*1030(mm)	4080*1240*1030(mm)	6100*1240*1030(mm)
Block size	2000*1200*1000(mm)	3000*1200*1000(mm)	4000*1200*1000(mm)	6000*1200*1000(mm)
Capacity	5min/cycle	6min/cycle	7min/cycle	8min/cycle
Power	20.5-24.5kw	20.5-24.5kw	24.5-35.5kw	24.5-35.5kw
Overall dimension	5700*4000*2850(mm)	7200*4500*3000(mm)	11000*4500*3000(mm)	2600*3960*2906(mm)
Weight	6000kg	7200kg	12000kg	15000kg
Room height required	6000mm	6000mm	6000mm	6000mm

Expansion drum	Ø1,500
First pass range	12~30g/l
Tolerance	within +/-5%
Second pass range	8~11g/l
Capacity approx	12g/l=600kg/h
	15g/l=900kg/h
	20g/l=1200kg/h
	30g/l=1500kg/h
Second pass approx	8g/l=350kg/h
	10g/l=450kg/h



EPS shape molding production line

EPS interior decoration cornice production line main machine list



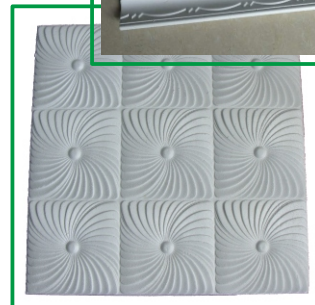
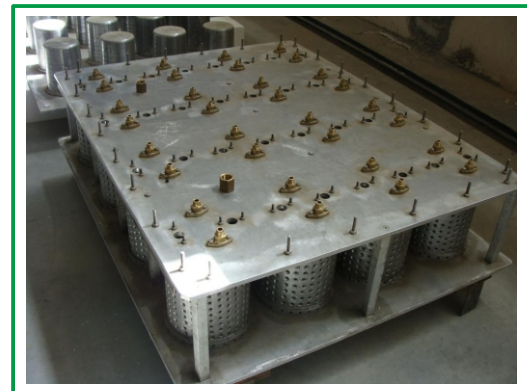
Type	Mould size	Max product size
1214	1400x1200	1200x1000x330
1416	1600x1400	1400x1100x330
1618	1800x1600	1600x1400x330
1422	2200x1400	2000x1300x330



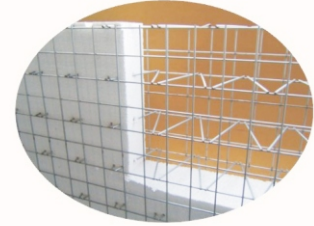
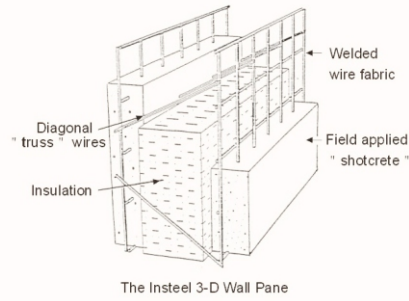
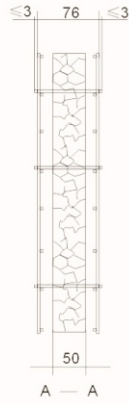
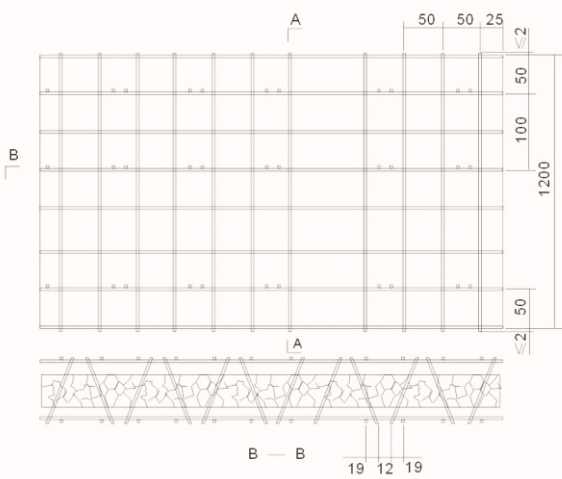
SPJ70	130kg/h at density 18g/l, density range : 12-50g/l
SPJ110	400kg/h at density 18g/l, density range : 12-35g/l
SPJ130	700kg/hour at density 18g/l, density range : 12-30g/l



1	Batch Pre-expander SPJ70 Density :12-50g/l	1unit
2	Automatic Shape molding machine Mould size:2200mmx1350mm The products size 2000x1200mm	1unit
3	Cornice moulds -1 6-8 different shape moulds	1units
4	Lamp and ceiling board , moulds2	1unit
B	Auxiliary Equipment	
5	Silo(Semi-Auto) System	6 units
6	Air Compressor 3.6m3/min, 7 bar	1unit
7	Compressed Air Tank With Accessary 2 m3	1unit
8	Steam Accumulator 3 m3 volumn	1unit
9	Cooling Water Pump,Cooling Tower 50m3/hour , as well as 7.5kw pump.	unit
10	Steam Boiler 1 tons per hour , 1Mpa	1unit
Total machine investment is around \$180,000		



3D WIRE MESH PANEL PRODUCTION LINE



The Insteel 3-D Wall Pane

Length (mm)	Width (mm)	Thickness (mm)	Truss wire (mm)	Mesh size (mm)
2400-4000	1220	Max. 150	Φ2-3	50 x 50 100 x 100
Configuration		3m ³ /min, 0.7MPa		
Production Capacity		Approx. 500-800m ² / 8 hours		
EPS core panel thickness		50-130mm		
Density of EPS core panel required		16kg/m ³		
Wire required		Cold drawing galvanized steel wire Compression strength: 550-750MPa		
Distance between wire mesh net & EPS core panel		10-30mm		



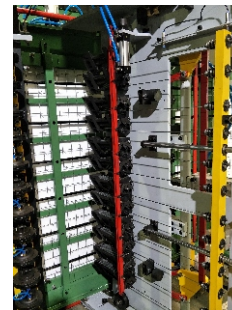
Building before completion



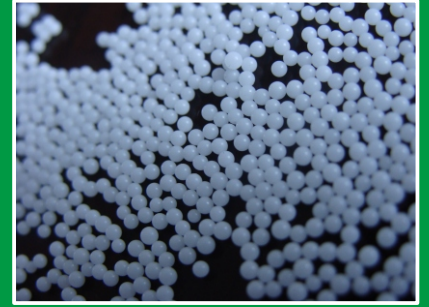
Building after the completion

The Whole production include the following equipments

use	no.	device	model	quantity	remark
Welded flat screen	1	Welded flat screen	3DW-A	1set	
		Including: elbow type vertical wire of wire coil 25, longitudinal wire straightening frame 1, resistance welding transformer cabinet 1, welding machine 1 Taiwan, cutting machine 1 sets, PLC control cabinet 1, 1 sets of water cooling device.			
Straightening and cutting Mesh ABB	2	Straightening and cutting machine	Jz II	bent type,3 wire coils	Used for welding machine
3Dpanel welding	3	Insert wire welding machine	CH- I	1 set	
		Include: 1 set welding machine,1 pair wire inserting into the grid, 4 pcs roller framer PLC control cabinet 1			
Straightening and cutting machine 3D Panel The oblique inserting	4	Straightening and cutting machine	Jz II	bent type,3 wire coils	Insert wire Welding machine
patch welding	7	spot-welder	DH25- I	1 set	



EPS (expandable polystyrene) Resin



EPS(Expandable Polystyrene) is a lightweight, rigid, plastic foam insulation material produced from solid particles of polystyrene. Expansion is achieved by virtue of small amounts of pentane gas dissolved into the polystyrene base material during production. The gas expands under the action of heat, applied as steam, to form perfectly closed cells of EPS.

what is our advantage?

- 1) 1.4 million ton yearly production , ensure your order delivery at anytime.
- 2) our material have very stable performance, which ensure the stable quality of your products.
- 3) high specification for expansion and fusion can ensure the same strength of EPS products with less material, For example, ZKF302 type. It can easily get 8 g/l with double expansion.

SPECIFICATION

PKF-XJ High expansion					PKF-XS Fast cycle				
GRADE	BEAD SIZE(Diameter)	Recommended Density	Expandable Rate(one time)	Applications	GRADE	BEAD SIZE(Diameter)	Recommended Density	Expandable Rate(one time)	Applications
	MM	G/L	Times			MM	G/L	Times	
PKF-301XJ	1.00-1.60	11-15	70-90	Heavy duty block sheet and light weight molding	PKF-302XS	0.80-1.25	15-22	45-65	Monitor and large packaging molding
PKF-302XJ	0.80-1.25	12-16	65-85	Regular package and box molding	PKF-303XS	0.70-1.00	16-25	40-60	Precision and thin wall package moldings
PKF-303XJ	0.70-1.00	13-17	60-75	Precision and thin wall package moldings	PKF-401XS	0.50-0.80	18-25	40-55	Precision and high density articles
PKF-401XJ	0.50-0.80	14-19	55-70	Precision and high density articles	PKF-501XS	0.40-0.60	20-33	30-50	Precision and high density articles
PKF-501XJ	0.40-0.60	15-20	50-65	Precision and high density articles					
PKF-XB High strength					ZKF Flame retardant				
PKF-301XB	1.00-1.60	11-14	70-90	Large box and floor applications	ZKF 301	1.00-1.60	15-22	45-65	Heavy duty block sheet and light weight molding
PKF-302XB	0.80-1.25	11-15	65-85	Large box and low density applications	ZKF 302	0.80-1.25	15-25	40-65	Heavy duty block sheet and light weight molding
PKF-303XB	0.70-1.00	13-17	60-75	Middle size boxes and high density floor applications	ZKF 303	0.70-1.00	16-25	40-60	Middle density applications
PKF-401XB	0.50-0.80	14-18	55-70	Precision and thin wall parts, boxes	ZKF 401	0.50-0.80	20-33	30-50	High density applications
PKF-501XB	0.40-0.60	15-20	50-65	Precision and thin wall parts, boxes	ZKF 501	0.40-0.60	25-40	25-40	Heavy board and product for special use

